

Expected changes in PRTR Reporting Industrial Emissions Portal Regulation

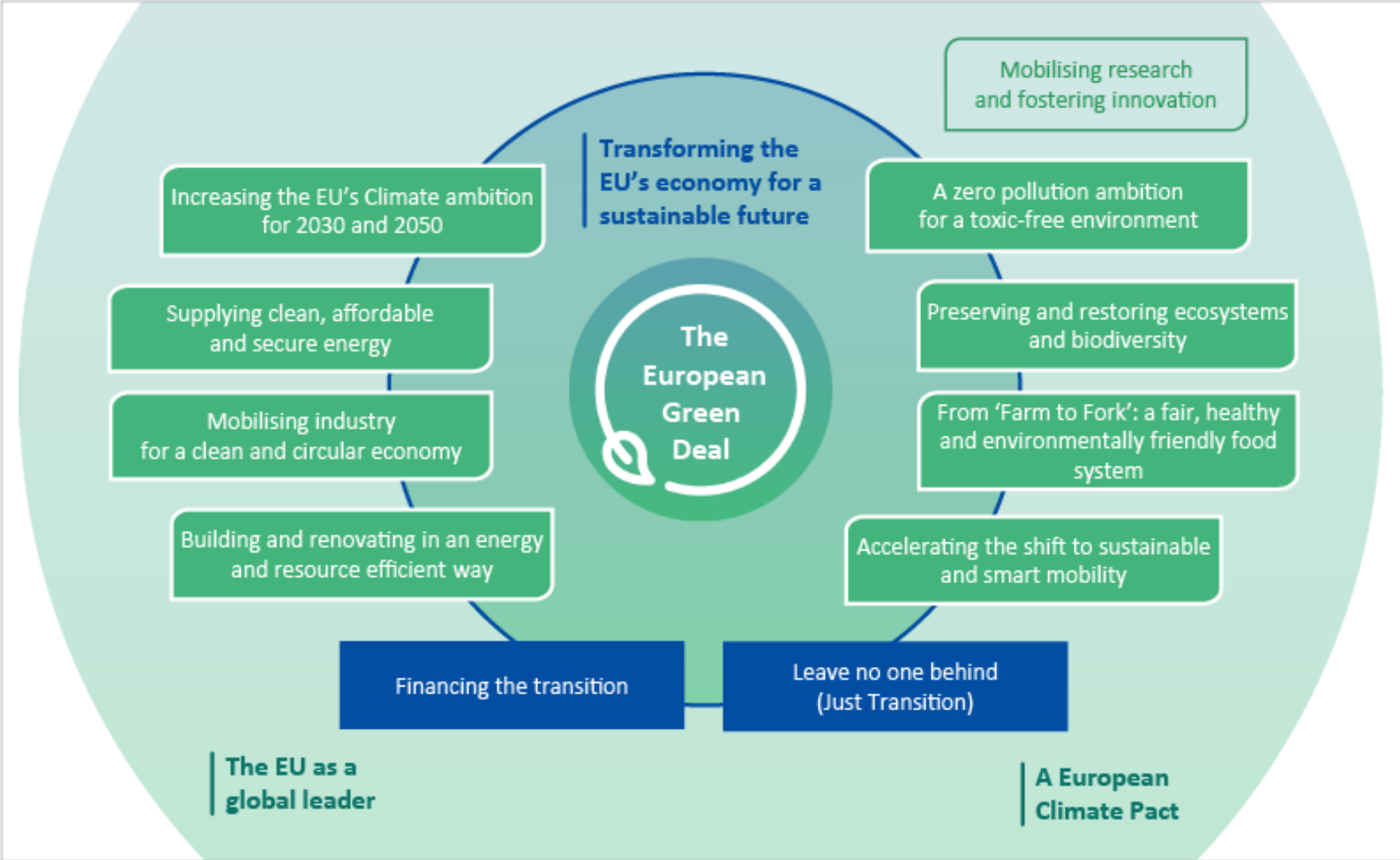


Daniel Montalvo/ TFEIP/ 14 May 2024



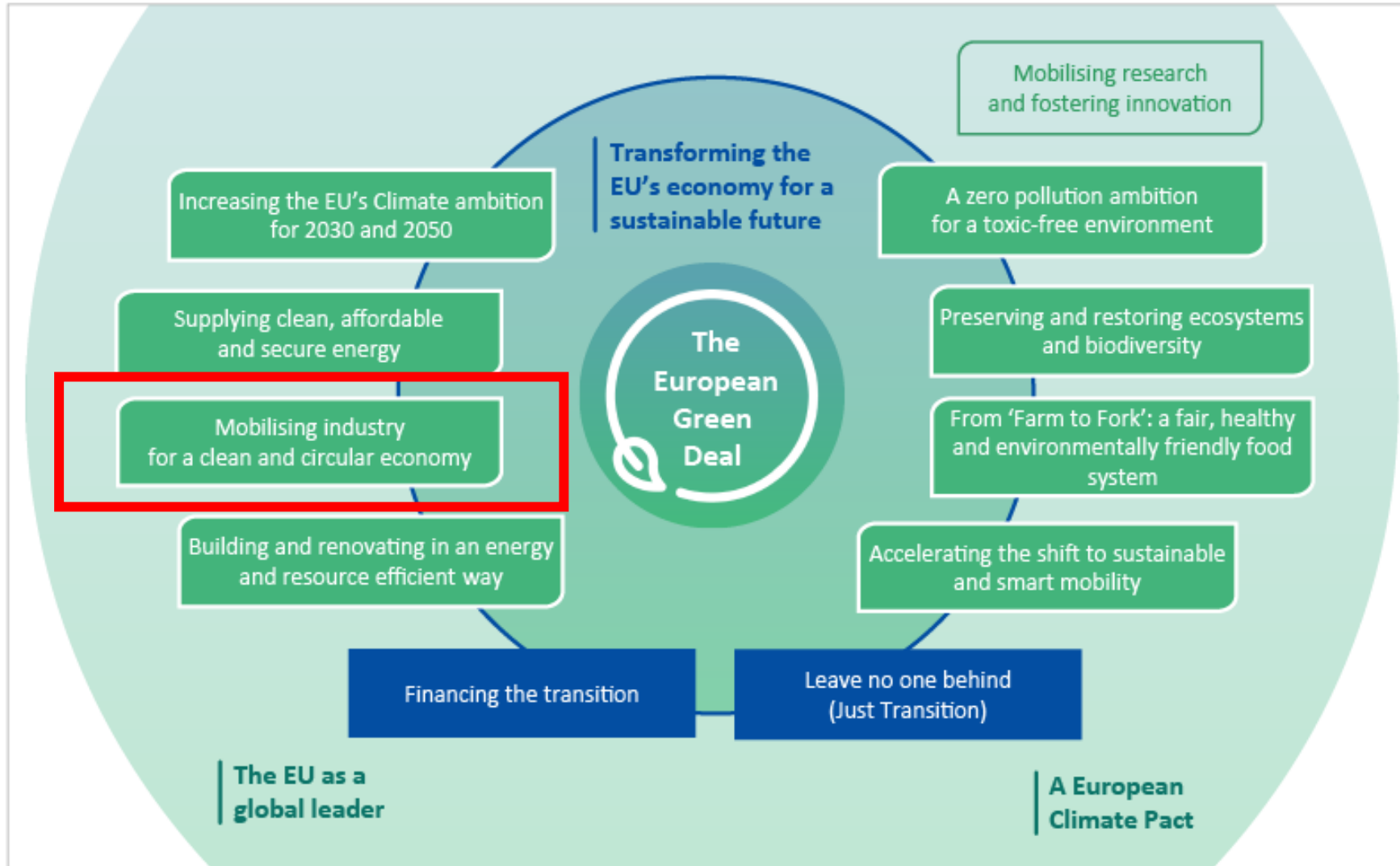
EU Green Deal

The European Green Deal



Sustainable industry one of the key building blocks

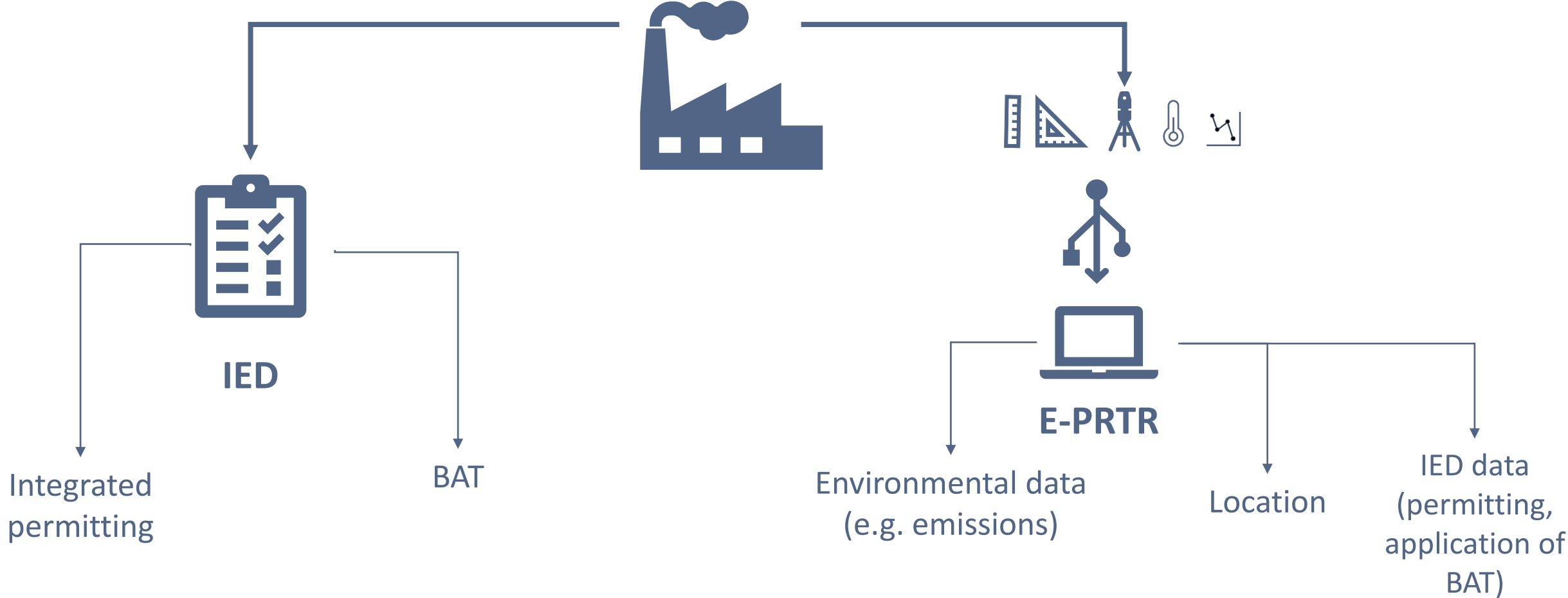
The European Green Deal



... possibly one element kept in upcoming EU cycle

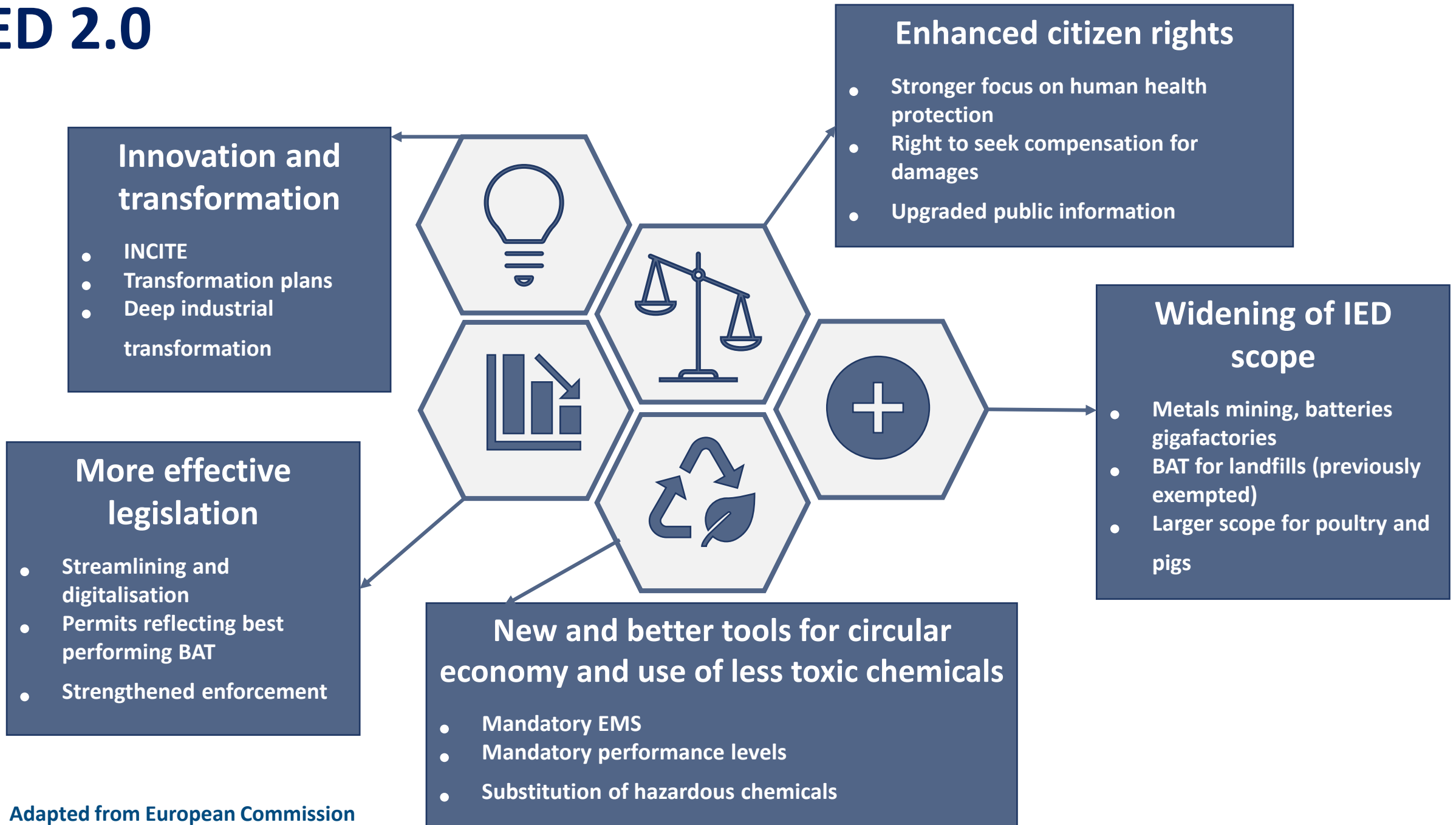
- Beyond one policy - linkages
- **Strategic autonomy** and re-industrialisation
- **Implementation**, implementation, implementation
- **Scaling up** country experiences, innovation

Main EU legislation for industrial pollution



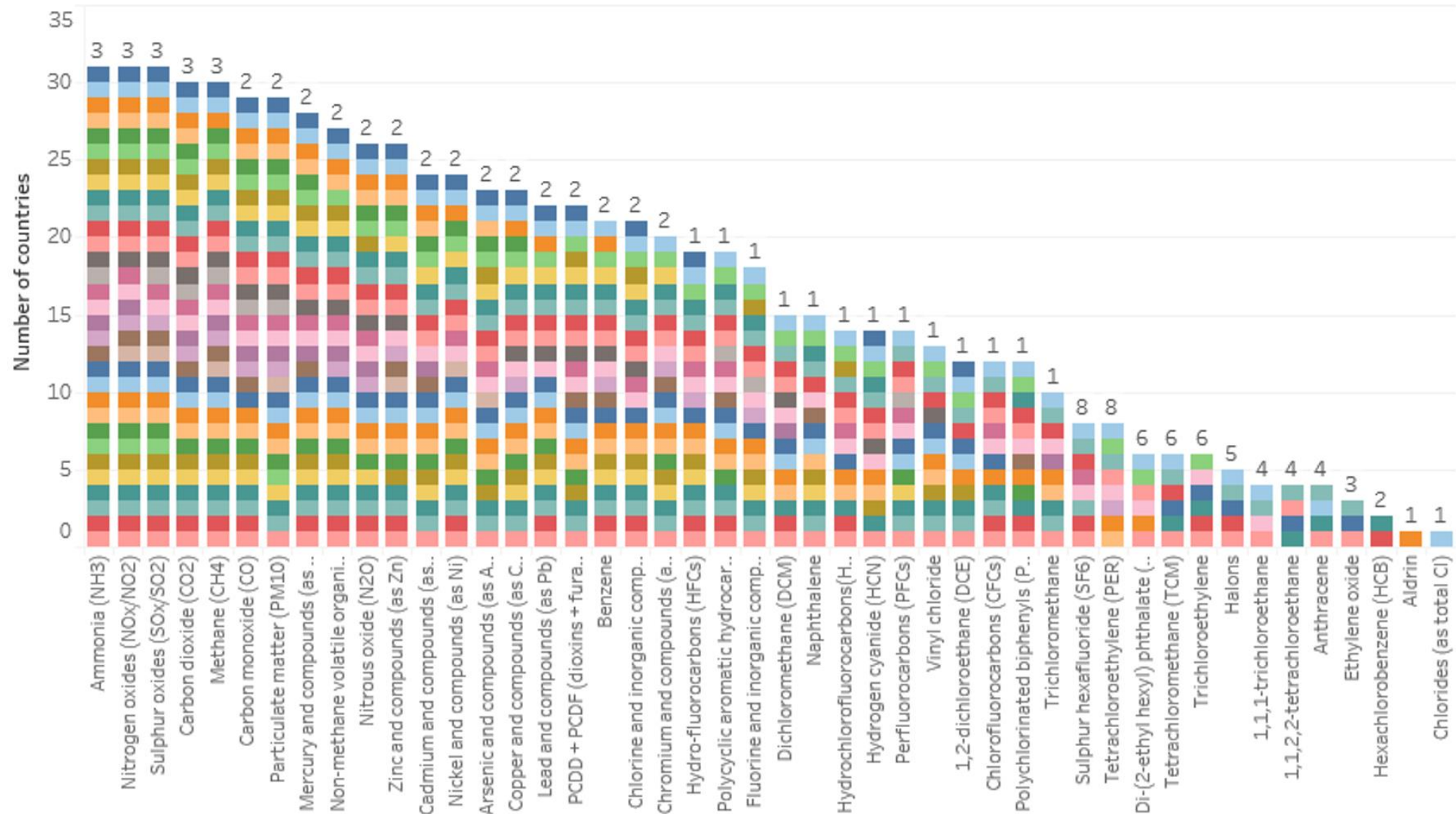
The revised IED in brief

IED 2.0

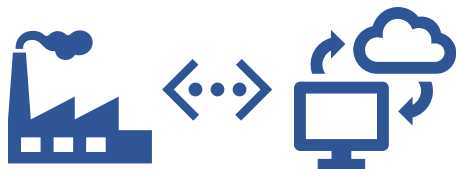


The revised PRTR - environment data

We need to know more, we need to know earlier



Towards a monitoring system that delivers



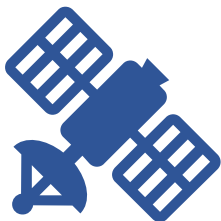
**From 2-year lag
to real-time
monitoring**



**Resource use
Production output**



**Understanding
generation of waste**



**The opportunity
of Copernicus**



**Understanding
implementation**



**Integration to reduce
burden**

Changes in brief - Portal Regulation (Regulation (EU) 2024/1244)

- **Three main data flows, possible future integrations**
 - Registry of industrial sites
 - Resource use, production volumes and emissions data
 - Regulatory data
- **Installation-level reporting**
- **Regulatory flexibility**
- **Additional sectors**

The Portal Website - <https://industry.eea.europa.eu/>

[HOME](#)[EXPLORE](#)[ANALYSE](#)[DOWNLOAD](#)[POLLUTANTS](#)[ABOUT](#)

European
Environment
Agency

Welcome to the European Industrial Emissions Portal

The website presents information on the largest industrial complexes in Europe, releases and transfers of regulated substances to environmental media, waste transfers as well as more detailed data on energy input and emissions for large combustion plants in EU Member States, Iceland, Liechtenstein, Norway, Serbia, Switzerland and the United Kingdom.

If you are new to this topic, please make sure that you [read our guide](#) on what to find in the portal. You can explore the data online, or [download](#) datasets and work with them in a software of your own preference.

EXPLORE THE DATA See what's happening in your area

The banner features a map of Europe with a red-to-blue gradient. A curved path of icons connects various industrial sectors: FOOD and BEVERAGE (cup and saucer), WATER and WASTEWATER (trash can), INTENSIVE LIVESTOCK (pig), MINERALS (gemstone), OTHER (three dots), PAPER and WOOD (trees), METALS (factory), ENERGY (lightning bolt), and CHEMICALS (flask).



ANALYSE

Find the biggest polluters and compare data across countries



DOWNLOAD


Work with raw datasheets on your own choice of software



ABOUT

New to this topic?
Understand the Industry portal


The EU Registry - Concept



INSPIRE
Infrastructure for Spatial Information in Europe

D2.8.III.8 Data Specification on Production and Industrial Facilities – Technical Guidelines

Title D2.8.III.8 INSPIRE Data Specification on Production and Industrial Facilities – Technical Guidelines
Creator INSPIRE Thematic Working Group Production and Industrial Facilities
Date 2013-12-10
Subject INSPIRE Data Specification for the spatial data theme Production and Industrial Facilities
Publisher European Commission Joint Research Centre
Type Text
Description This document describes the INSPIRE Data Specification for the spatial data theme Production and Industrial Facilities
Contributor Members of the INSPIRE Thematic Working Group Production and Industrial Facilities
Format Portable Document Format (pdf)
Source
Rights Public
Identifier D2.8.III.8_v3.0
Language En
Relation Directive 2007/26/EC of the European Parliament and of the Council of 14 March 2007 establishing an Infrastructure for Spatial Information in the European Community (INSPIRE)
Coverage Project duration

4.2.2006  Official Journal of the European Union L 131

1
(Act which publishes in all languages)

REGULATION (EC) No 166/2006 OF THE EUROPEAN PARLIAMENT AND OF THE COUNCIL of 18 January 2006 concerning the establishment of a European Pollutant Release and Transfer Register and amending Council Directives 1980/369/EEC and 1991/676/EEC (Text with EEA relevance)

THE EUROPEAN PARLIAMENT AND THE COUNCIL OF THE EUROPEAN UNION,
 Having regard to the Treaty establishing the European Community, and in particular Article 175(1) thereof,
 Having regard to the proposal from the Commission,
 After consulting the Committee of the Regions,
 Acting in accordance with the procedure laid down in Article 251 of the Treaty (1),
 Whereas:

(1) The Sixth Community Environment Action Programme adopted by Decision No. 1600/2002/EC of the European Parliament and of the Council (2) requires improving the performance of existing instruments to address the state and trends of the environment in relation to social, economic and health trends as well as the general state of environmental awareness.


(2) The UNEP Convention on Access to Information, Public Participation in Decision-making and Access to Justice in Environmental Matters (hereinafter 'the Aarhus Convention'), signed by the European Community on 25 June 1998, requires that increased public access to environmental information and the dissemination of such information contribute to a greater awareness of environmental matters. A free exchange of views, more effective participation by the public in environmental decision-making and, eventually, to a better environment.

(3) Pollutant release and transfer registers (hereinafter 'PRTs') are an effective tool for encouraging improvements in environmental performance, for providing public access to information and for increasing public awareness.

(4) The objective and goals pursued by a European PRT can only be achieved if data are reliable and comparable. An adequate harmonisation of the data and their collection systems is therefore needed to ensure the quality and comparability of data. In accordance with the Protocol to the European PRT, it should be designed for maximum use of public access through the Internet. Release and transfer data should be clearly identified in different geographical and non-geographical forms in order to assure a maximum of information in a reasonable time.

(5) Regulation (EC) No 166/2006, p. 1.

(1) OJ L 12, 18.1.2006, p. 16.

17.12.2010  Official Journal of the European Union L 340/7

DIRECTIVES

DIRECTIVE 2007/26/EC OF THE EUROPEAN PARLIAMENT AND OF THE COUNCIL of 24 November 2007 on industrial emissions (integrated pollution prevention and control) (Text with EEA relevance)

THE EUROPEAN PARLIAMENT AND THE COUNCIL OF THE EUROPEAN UNION,
 Having regard to the Treaty on the Functioning of the European Union, and in particular Article 192(1) thereof,
 Having regard to the proposal from the Commission,
 Having regard to the opinion of the European Economic and Social Committee (3),
 Acting in accordance with the ordinary legislative procedure (4),
 Whereas:

(1) A number of substantial changes are to be made to Council Directive 2004/107/EC of 20 January 2004 on noise from the transport (aircraft, railway, road, inland waterway, motor vehicles, tractors, motor cycles, lawnmowers, non-governmental organisations and other recreational) and other recreational law should be consistent with that Treaty with a view to its conclusion by the Community.

(2) On 21 May 2003 the European Community signed the UNEP Protocol on Pollution Release and Transfer Register (hereinafter 'the Protocol') Pursuant to Community law should be consistent with that Treaty with a view to its conclusion by the Community.

(3) A European Pollutant Release Register (hereinafter 'PRT') was established by Commission Decision 2004/976/EC (5). The Protocol builds on the same principles as PRTs, but goes beyond by including reporting on other pollutants (noise, activities, releases to land, releases from diffuse sources and IPH-0101).

(4) The objective and goals pursued by a European PRT can only be achieved if data are reliable and comparable. An adequate harmonisation of the data and their collection systems is therefore needed to ensure the quality and comparability of data. In accordance with the Protocol to the European PRT, it should be designed for maximum use of public access through the Internet. Release and transfer data should be clearly identified in different geographical and non-geographical forms in order to assure a maximum of information in a reasonable time.

(5) OJ L 31, 14.1.2004, p. 46.
 (6) OJ L 31, 14.1.2004, p. 46.
 (7) Protocol to the European PRT of 16 March 2004 (PEL 17/04), p. 1039 and previous of the Council in the meeting of 15 November 2004 (PEL 17/04), p. 1039.
 (8) OJ L 14, 14.1.2004, p. 16.
 (9) OJ L 14, 14.1.2004, p. 16.
 (10) OJ L 40, 10.12.1992, p. 11.

(1) OJ L 31, 14.1.2004, p. 1.
 (2) OJ L 14, 14.1.2004, p. 1.
 (3) OJ L 14, 14.1.2004, p. 1.
 (4) OJ L 14, 14.1.2004, p. 1.
 (5) OJ L 14, 14.1.2004, p. 1.



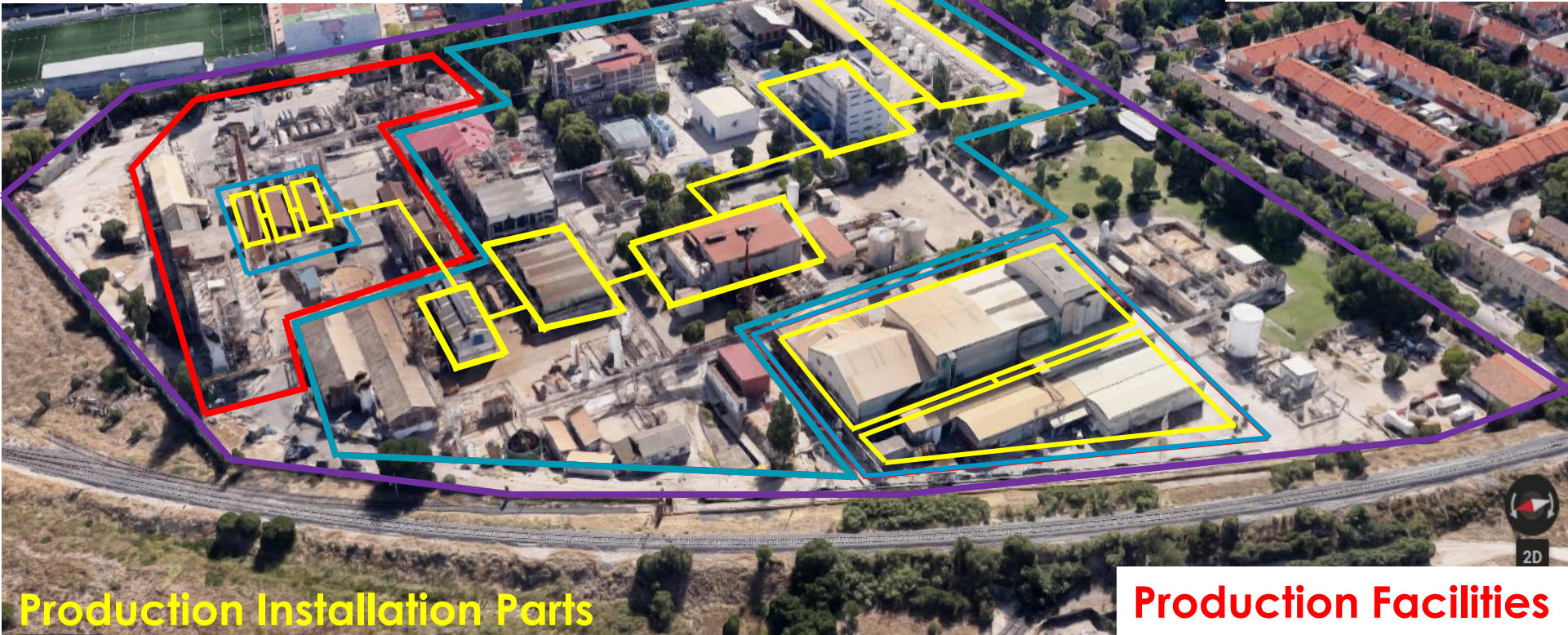
| EU Registry | INSPIRE | E-PRTR | IED |
|----------------------------|-------------|------------------------|------------------------|
| ProductionSite | Correlation | Correlation | No definition provided |
| ProductionFacility | Correlation | Correlation | No definition provided |
| ProductionInstallation | Correlation | Correlation | Correlation |
| ProductionInstallationPart | Correlation | No definition provided | Correlation |



The EU Registry - Concept

Production Installations

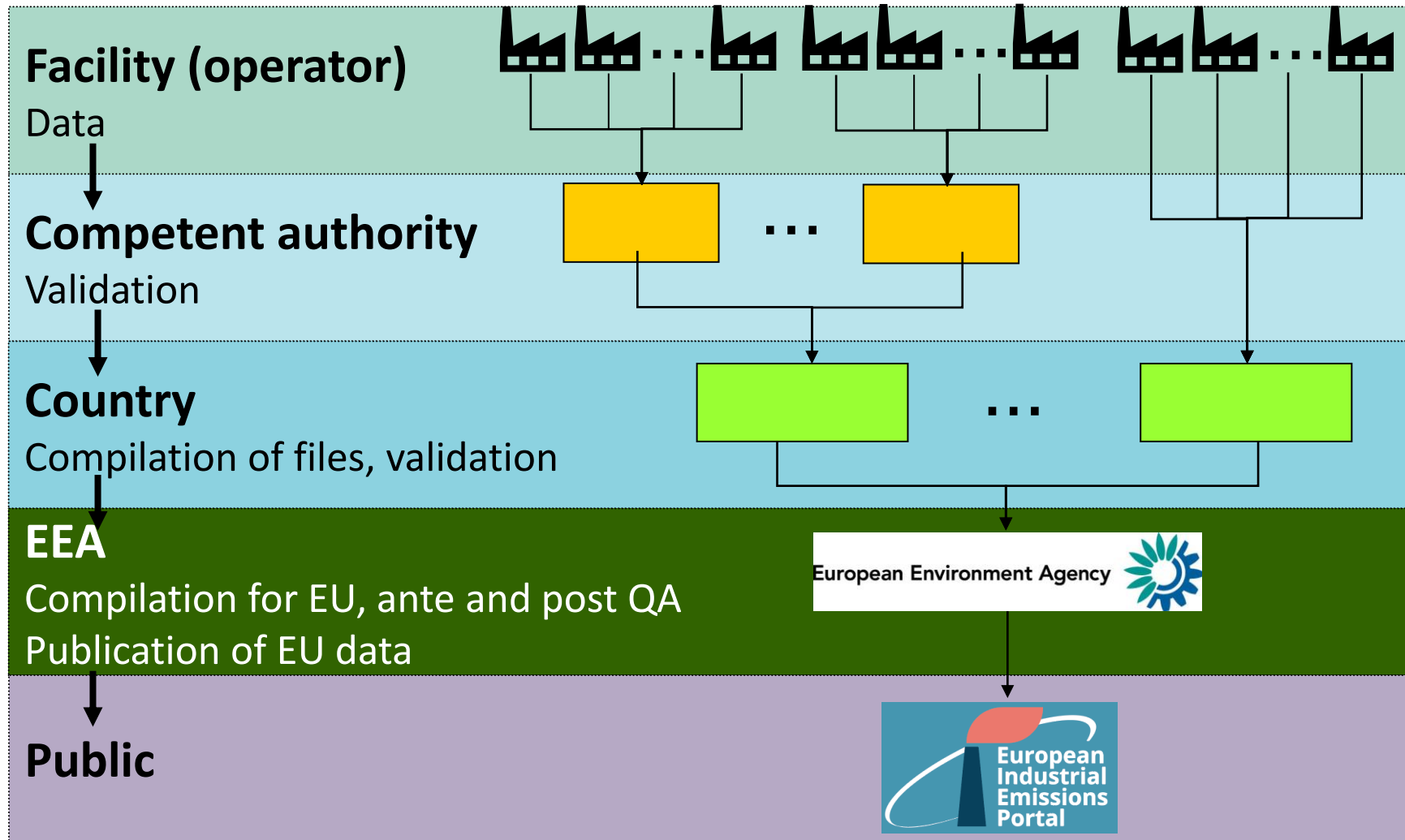
Production Site



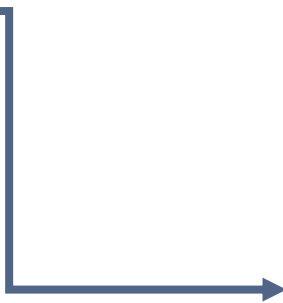
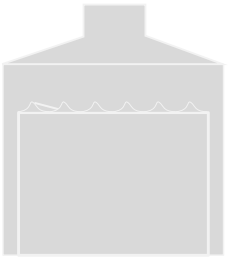
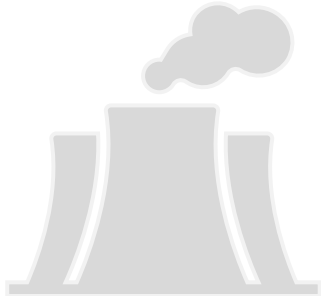
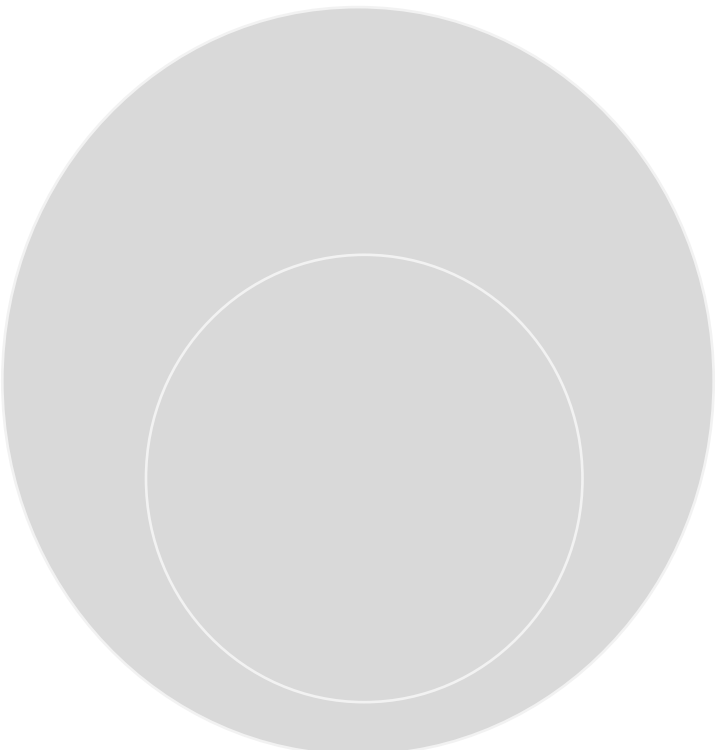
Production Installation Parts

Production Facilities

Reporting process

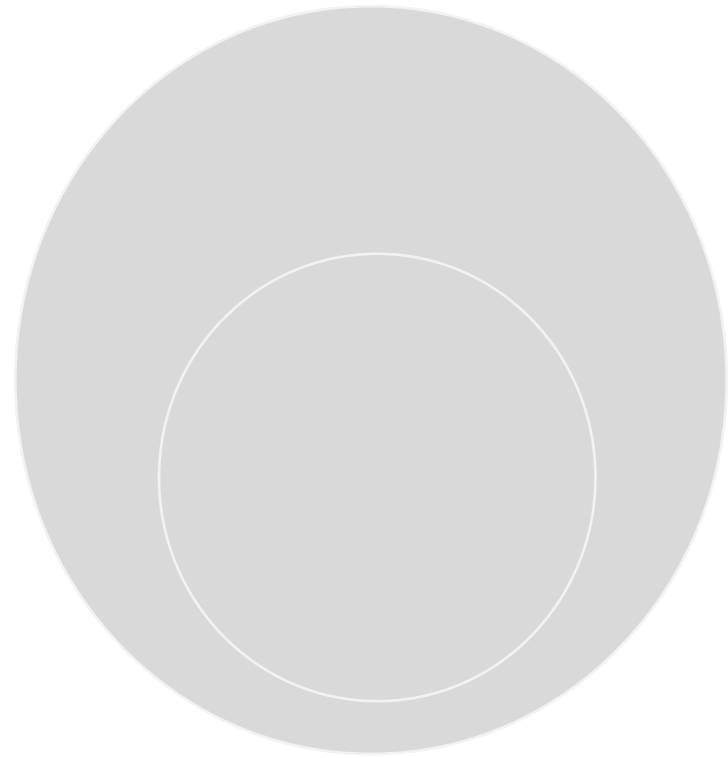


New industrial emissions portal Regulation

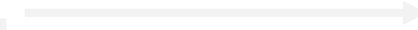


Installation-level reporting

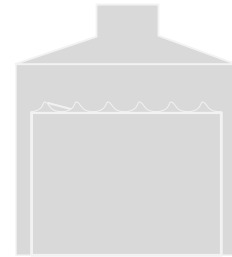
New industrial emissions portal Regulation



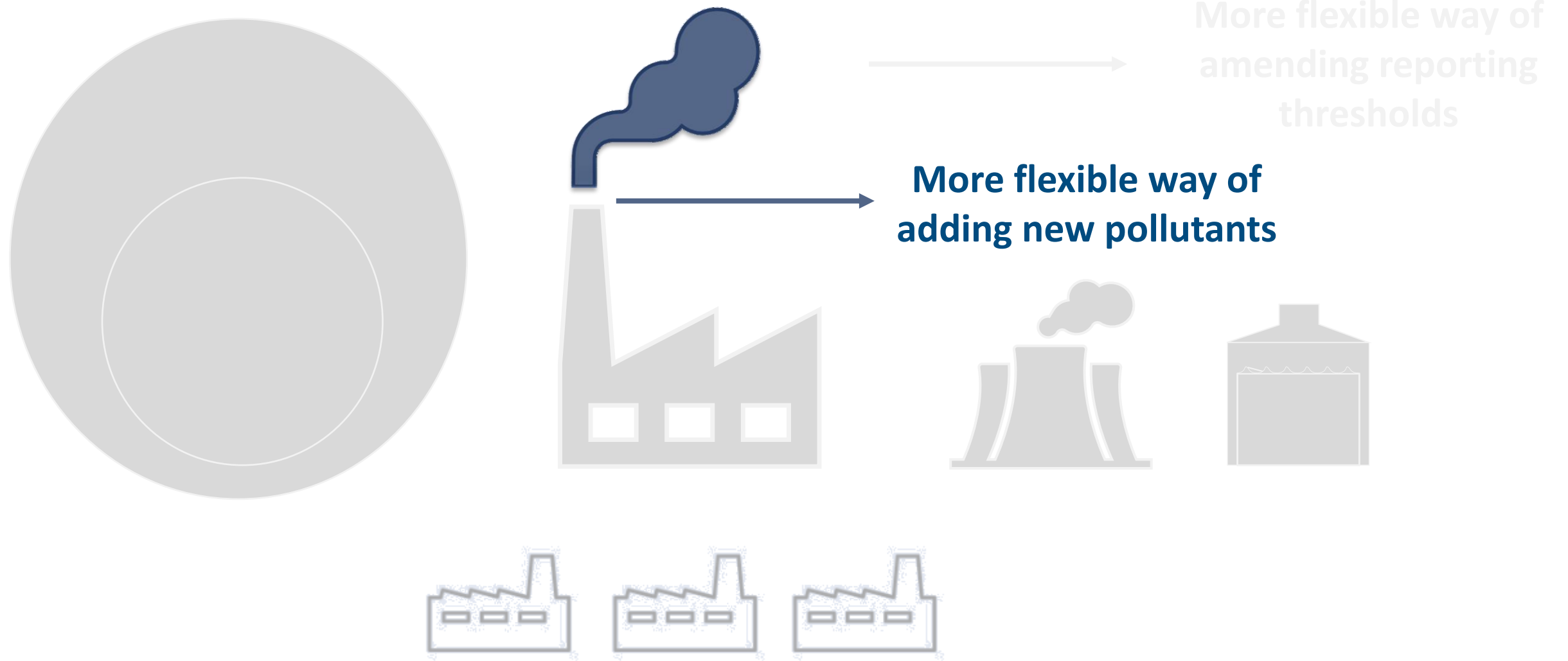
**More flexible way of
amending reporting
thresholds**



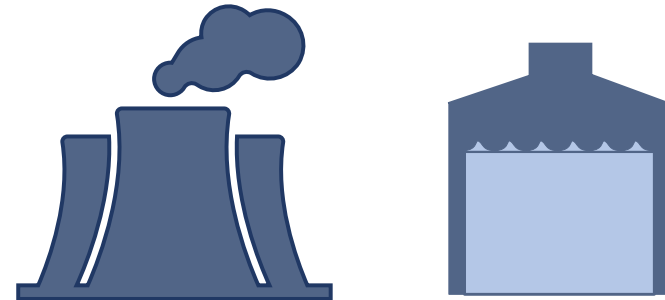
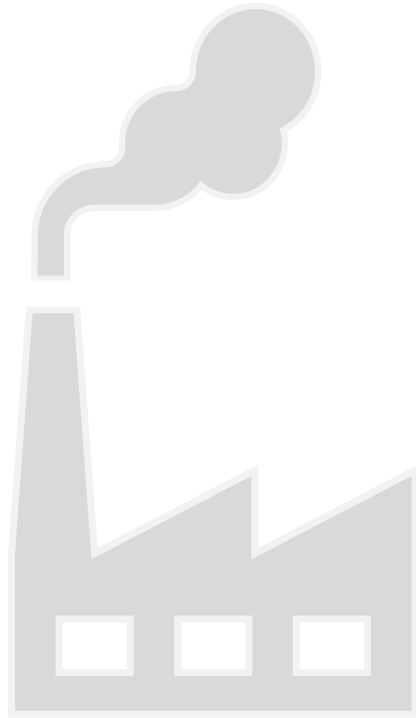
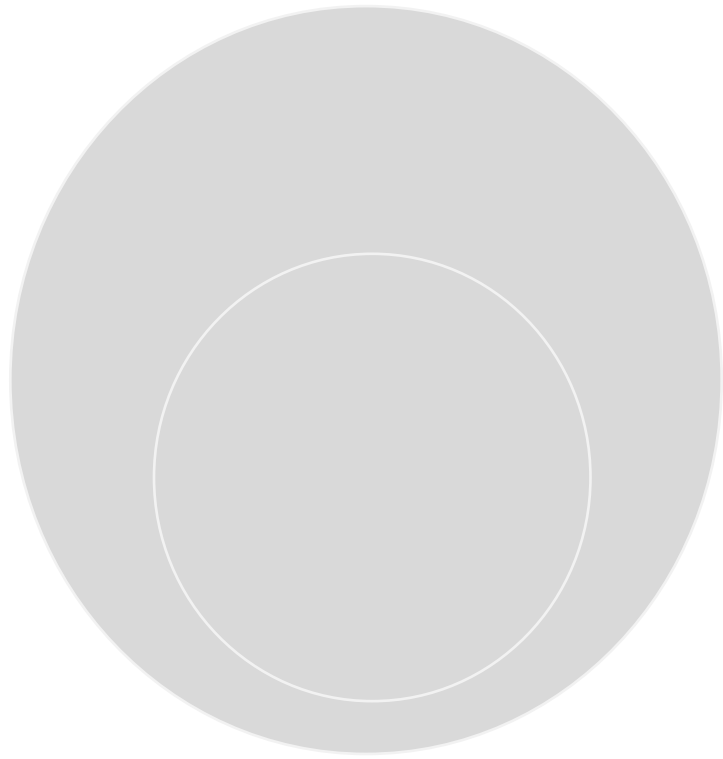
More flexible way of
adding new pollutants



New industrial emissions portal Regulation

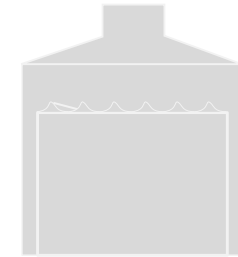
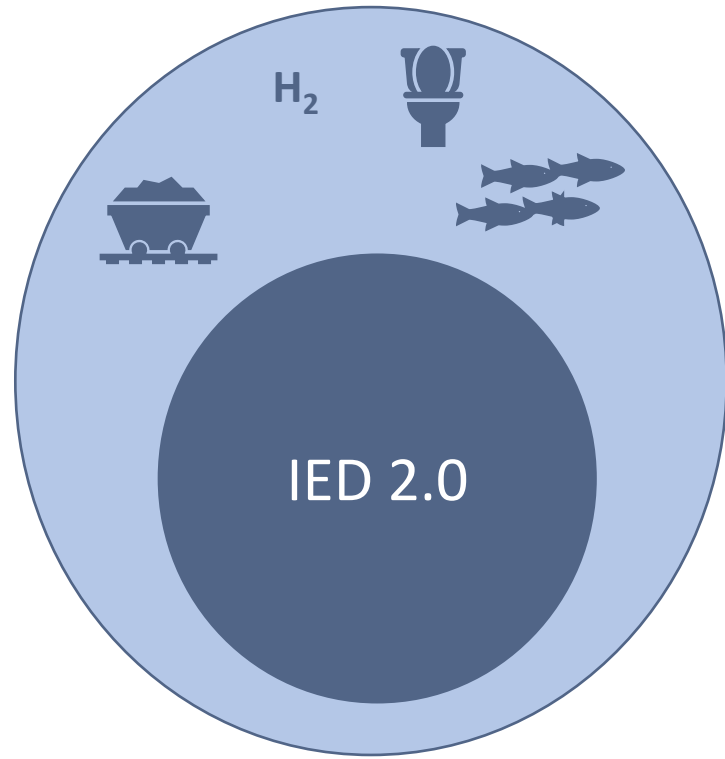


New industrial emissions portal Regulation

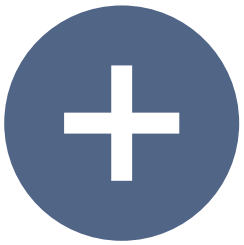
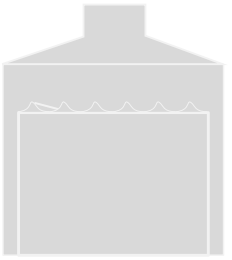
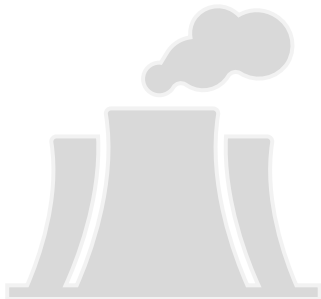
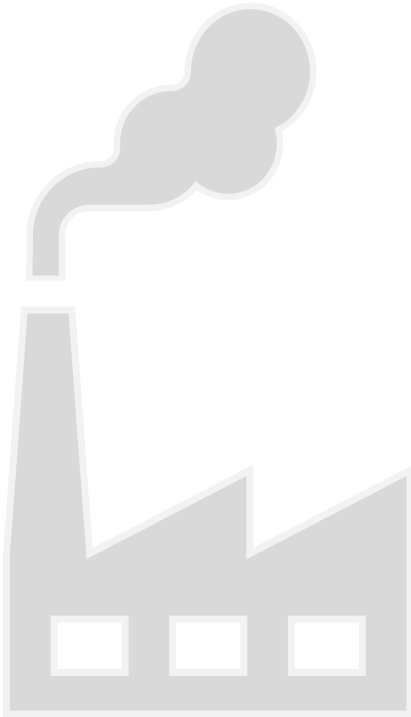
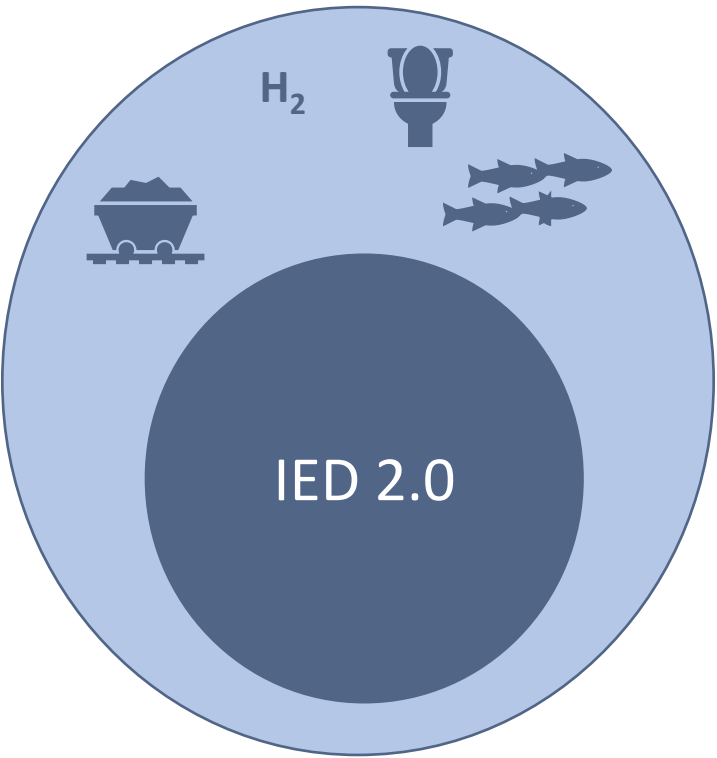


**Reporting of resource use
(energy, water, raw
materials)**

New industrial emissions portal Regulation



New industrial emissions portal Regulation



Regulatory data flow

What to expect in regulatory data flow

- **Specifics to be defined in implementing act**
- **Specific BAT reference in permit**
- **Permit life cycle**
- **Permit summaries online**
- **Derogations, baseline reports, other similar aspects**

All of this, when?

How and when

- **Process starts June 2024**
- **Implementing acts and preparation – 2025-2026**
 - **Defining reporting requirements (e.g. raw material lists)**
 - **Revising pollutant list and thresholds**
 - **Providing guidance (e.g. water emissions, installation level)**
- **Testing phase - 2027**
- **Fully operational - January 2028** (reporting year 2027)

Thank you



Daniel.montalvo@eea.europa.eu/ TFEIP/ 14 May 2024