

Cross-cutting analysis on GHG and air pollution policies and measures (PaMs)

Table of content

- Introduction
- PaMs reported under NEC
- Comparison between NECD and MMR PaMs

Inventories are the baseline for policy

- Inventories + projections --> policy
- Inventories provide the basic metric for tracking policy effectiveness
- Inventory improvements allow us to see policy effects
- Ideally AQ policies are coherent with GHG policies

Reporting Policies and Measures (PaMs) under the NEC Directive

Air Pollution PaMs have a narrow scope

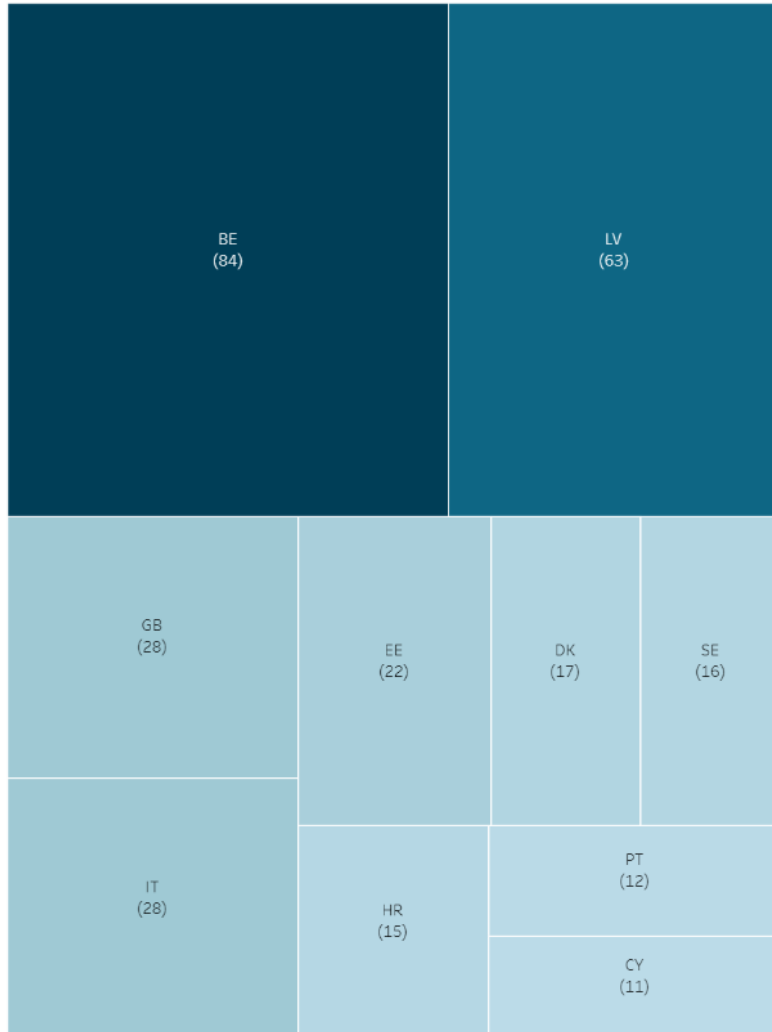
- Additional measures to meet emission reduction commitments
- Potentially more in NAPCPs
- 1st April 2019 first reporting
- 11* countries have reported by 13/5 (+1 outside webtool)

Reported PaMs – Which are the focus?

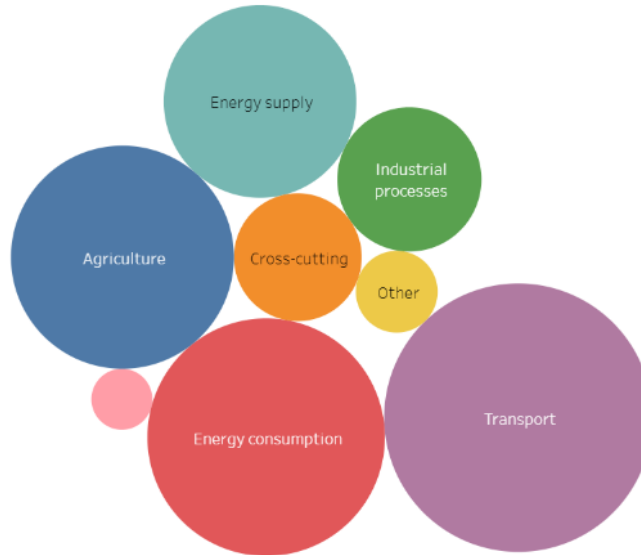
	Agriculture	Cross-cutting	Energy consumption	Energy Supply	Industrial Processes	Other	Transport	Waste management
Belgium	8%	7%	43%	7%	7%	6%	28%	1%
Croatia	64%	27%	18%	9%	9%		18%	9%
Cyprus	9%		36%	45%	9%		18%	
Denmark	38%			19%			44%	
Estonia	26%		5%	11%			58%	
Italy	25%		38%	13%			25%	
Latvia	25%	7%	24%	22%	13%	4%	22%	2%
Portugal	8%		8%	17%		8%	58%	
Sweden	20%		13%	7%	27%		40%	
United Kingdom	32%	18%		18%	23%		36%	

NECD PaMs Dataviewer

Number of PaMs by Member State

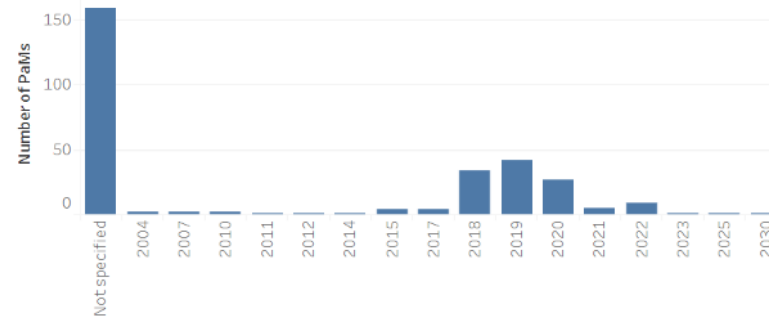


Number of PaMs by Sector



Note: each PaM can have more than one of the characteristics assigned to it, hence the total number of PaMs represented in the figures above may be greater than the number of PaMs reported by the Member State(s).

Planned year of adoption of PaMs



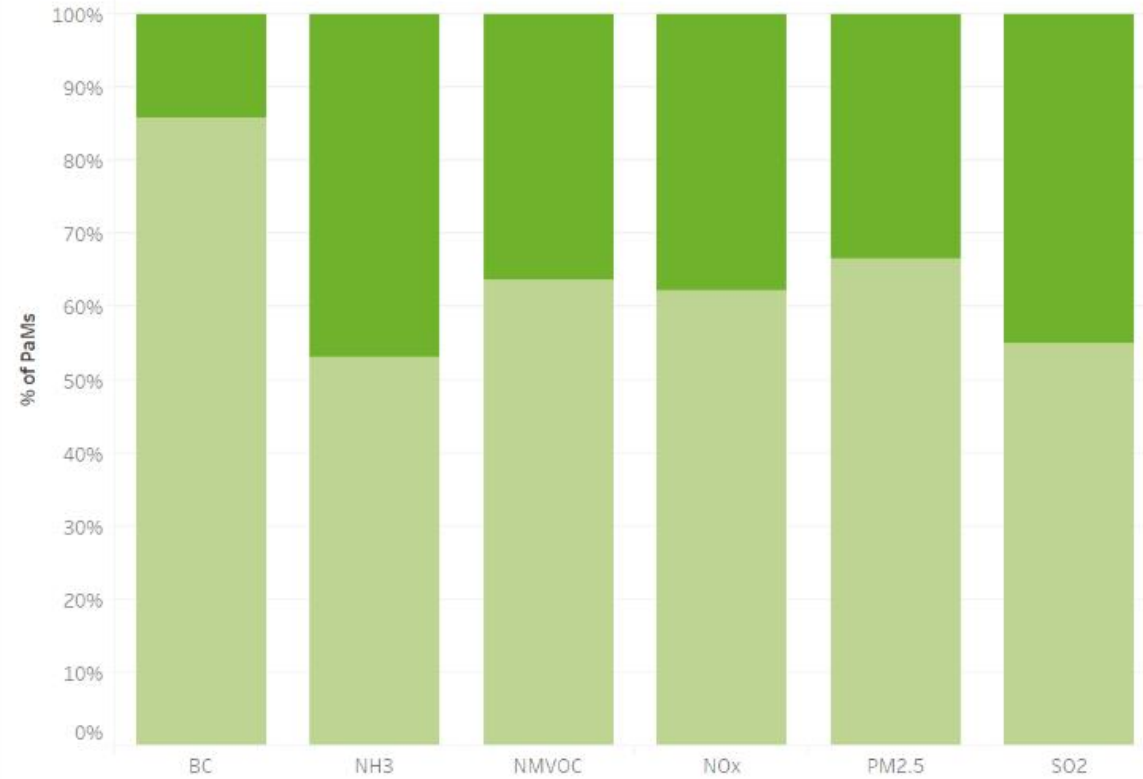
NECD PaMs Dataviewer

Number of PaMs by Member State



■ An ex ante estimate ■ No ex ante estimate

% PaMs with an *ex ante* estimate of emissions reduction



Choose pollutants to show in above graph:

Main NECD pollutants

Note: a '*' in the tooltip of the bars means that multiple Member States are selected. The default view is all Member States. Select a Member State from the map to filter the graph.



NECD PaMs Dataviewer

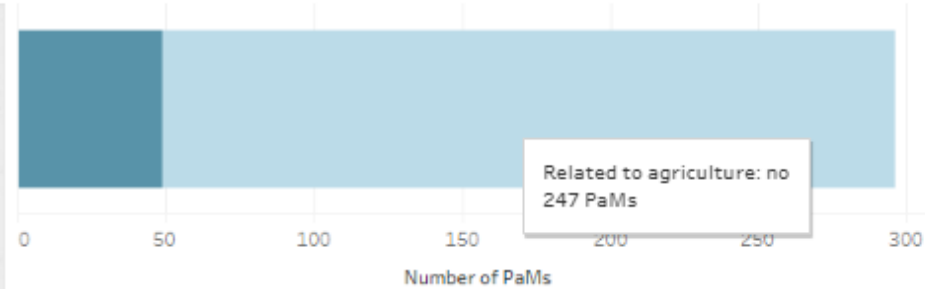
Additional air pollutant PaMs related to agriculture considered under the NECD

This sheet presents summary information reported through Table 2.6.4 of the Commission Implementing Decision 2016/1522, concerning additional details of the measures from Annex III Part 2 to Directive (EU) 2016/2284 targeting the agricultural sector to comply with emission reduction commitments.

Agricultural additional PaMs by Member State



Share of additional PaMs related to agriculture



Is the PaM agricultural related?
 ■ yes ■ no

The tables below contain the high level questions related to agriculture PaMs from the NECD questionnaire, showing the number of PaMs for each answer. Click on a Member State on the map to filter all of the tables. Click your selection again to reset.

Table 2.6.4 A - Measures to control ammonia emissions

Member State	Establishment of national advisory code to control ammonia?	Establishment of national nitrogen budget?	Prohibit use of ammonium carbonate fertilisers?	Reduce emissions from inorganic fertilisers?	Reduce ammonia emissions from livestock manure?	
Belgium	no	no	no	no	no	1
				yes	yes	4
				yes	no	1
Croatia	no	no	no	no	yes	1
				yes	no	6
Cyprus	yes	no	no	yes	yes	1



Comparison between Air Pollution and Climate Change Mitigation Policies

Air Pollution vs. Climate Change Mitigation



Comparing NECD and MMR Reporting

Type of PaM	Reporting requirement	
	MMR	NECD
Historic (expired)	Detailed information through the webtool where relevant	Not required
Active (implemented)	Detailed information through the webtool	Within the NAPCP (usually PDF file). No requirement to report individually or in detail.
Selected for adoption	Not required	Detailed information through the webtool
Considered but not selected for adoption	Not required	Detailed information through the webtool
Adopted or planned for implementation	Detailed information through the webtool	Optional reporting through webtool

Methodology to assess NECD and MMR PaMs

- Step 1 – assess NECD PaMs
- Step 2 – map the mandatory data fields
- Step 3 – analyse common data fields

Methodology to assess NECD and MMR PaMs

- Step 4 – map the optional data fields to assess potential for analysis
- Step 5 – review NAPCPs for potential further analysis
- Step 6 – identify good practice in NAPCP reporting

Methodology to assess NECD and MMR PaMs

- New data available for analysis
- Plan to assess coherence of Air Pollution and GHG PaMs, but structural differences mean small crossover
- Opportunities to improve analysis by using optional reporting fields